



**Key Words:**

**VMware WorkStation Version 6 Disaster Recovery Server**

VMware, Disaster Recovery, Virtual, Virtualization

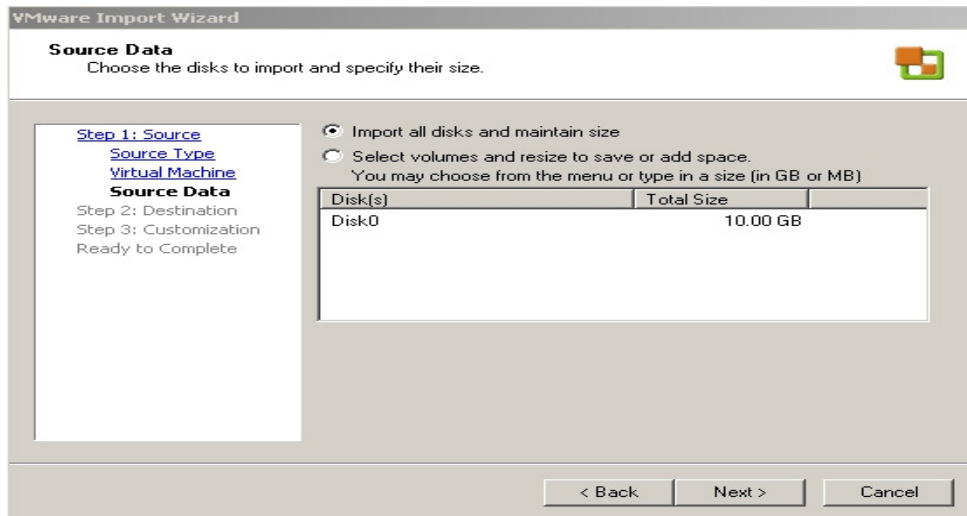
**Situation:**

How to use VMWare Workstation Version 6 as a Disaster Recovery Server Solution

**Solution:**

Using the following information as a set by step guide:

1. Create folder on D: drive or somewhere not the c: drive – call it “VMWareImages” – ensure that this disk has enough disk space for the images
2. Install and start VMWare Workstation version 6, next go edit and select preferences on the Workspace tab ensure this points to the folder created in item 1 and leave all other setting alone
3. Then go File - import – click next – on Step 1 Source go next – select Standalone Virtual Machine and go next – on Source VM or Image, browse to the \*.spk file of the C: drive from the server you want to virtualises (Note ensure that only SPK files exist and that any other partitions SPK’s are also present) then go next – on the next screen as shown



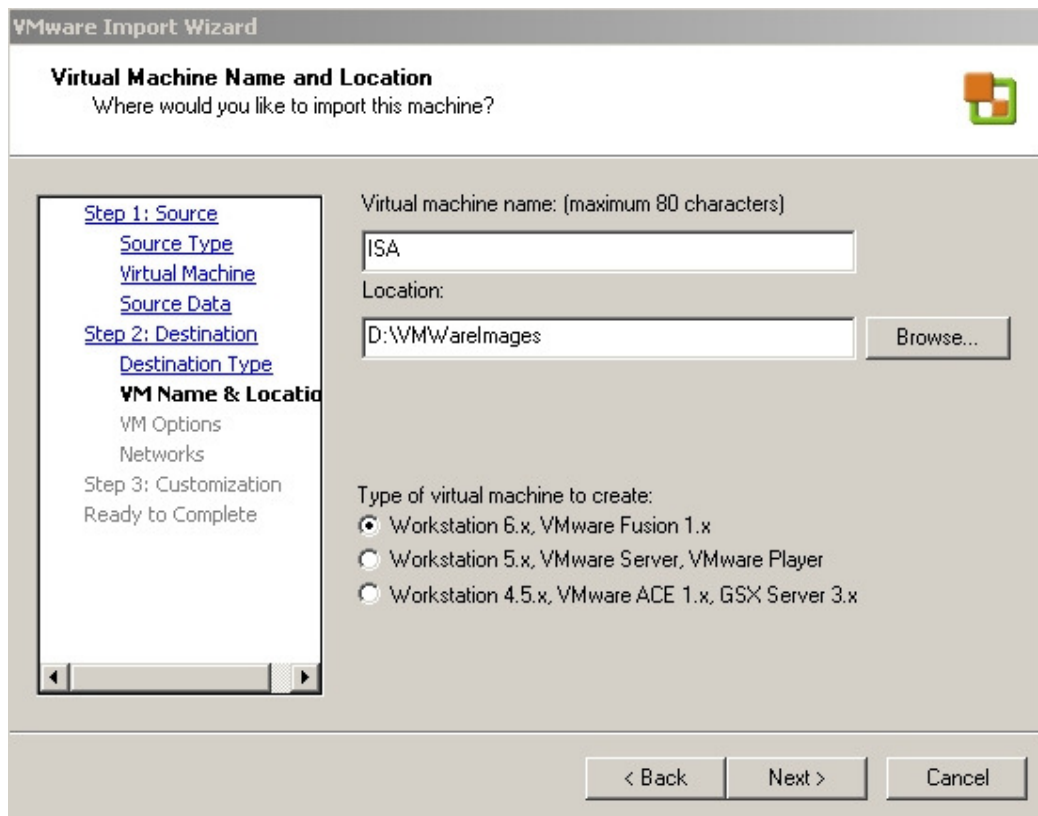
Preferably here use the default ( as shown it will maintain the size but the image file will only be 3-4GB is size, if you don't have the disk space you can select the bottom option and then by double clicking on the 10.00GB figure you can type in your own size)

Click next – on the set destination page go next – select VMware Standalone Virtual Machine

Click next – on the virtual machine name and location type in a name that represents the server you are importing and specify the destination as shown below and keep the defaults for the rest

Click next – on the VM Options page accept defaults

Click next – on the Networks page select one NIC in bridge mode and go next – on the Customisations page select install VMWare tools



Click next – on the summary page just go finished – on the Import page select the close when finished button and allow the job to complete – when complete click on Edit Virtual Machine settings, adjust memory to suit your requirements, highlight the floppy and deselect the connect at power on, down the bottom select add and select DVD/CD and go next accept the defaults then on the next page select the physical device (don't accept the auto detect option) and go finished and then go OK – next select start this virtual machine accept the two informational messages and allow this machine to start.

**NOTE:** Some key strokes to remember are **Ctrl-Alt-Enter** to make the VM use the entire screen and **Ctrl-Alt-Ins** to log into the machine.

Please note that if the original server was an SBS and or a Domain Controller you will need to immediately go to F8 active directory services restore mode to ensure that AD does not run and to fix the network adapter issues by uninstalling the old adapters and assign the IP address to the new adapter, **refer to the KB article called Hidden Devices.**

While this server is booting it will go through a whole detect new hardware routine  
– allow this to finish and then when complete it will also install the VMWare tools  
(an icon will appear in the task bar) allow this server to reboot and away you go!

### **Technical Information:**

Tested and validated on 5<sup>th</sup> July 2007

### **Related Knowledgebase articles**

- Hidden Devices